

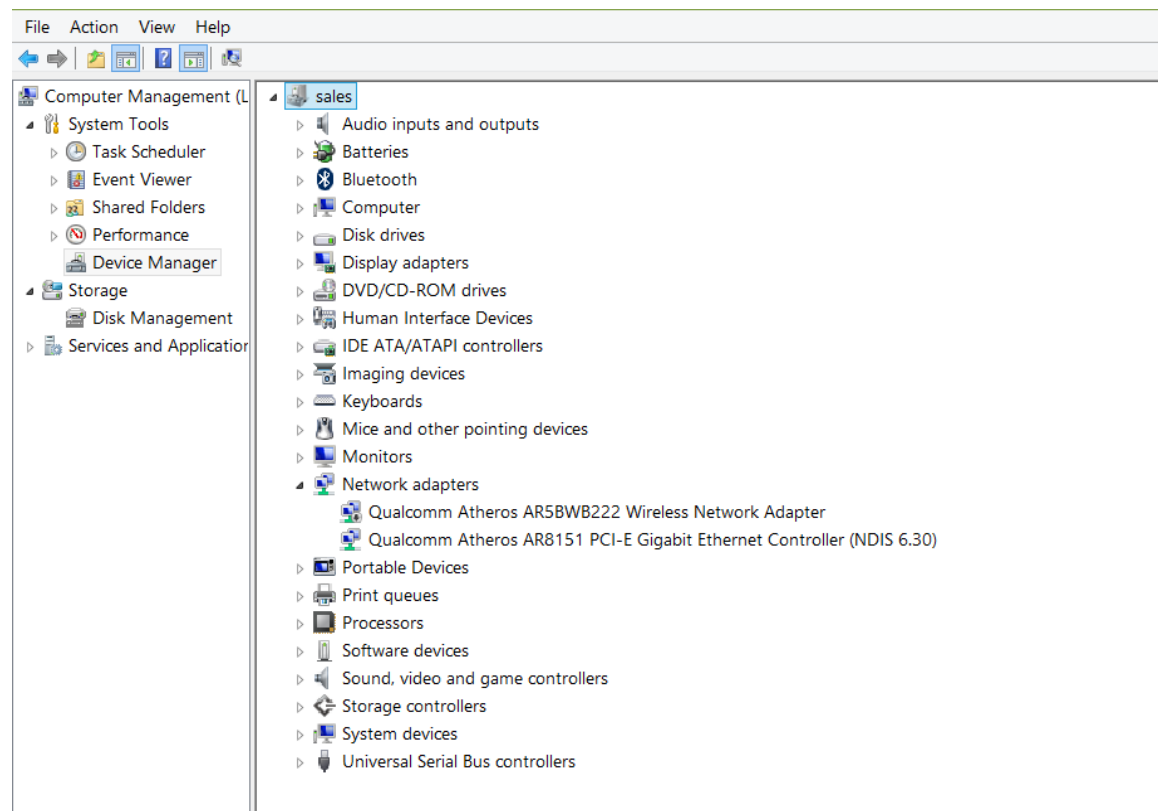
AWUS036NHA installation with Windows 8.1 / Windows 10

The driver installations of AWUS036NHA in Windows 8.1 and Windows 10 are similar.

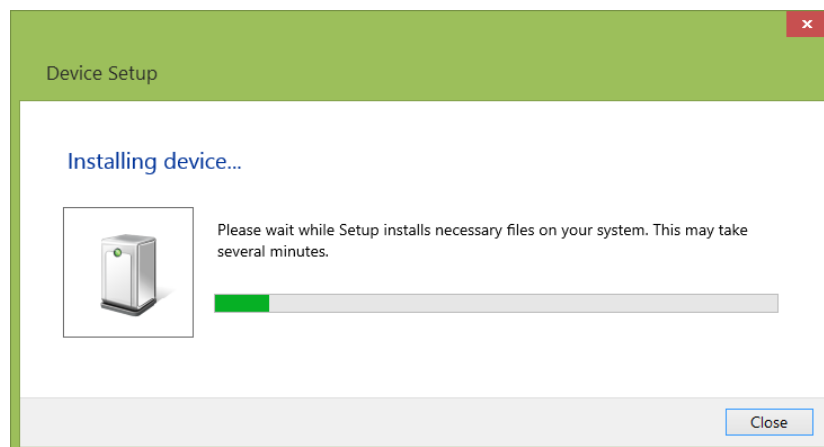
Following instructions are written with Windows 8.1 computer, which can be driver installation reference for Windows 10 computer users.

Before starting driver installation, please make sure your Windows 8.1 computer is connected to Internet via Ethernet connection.

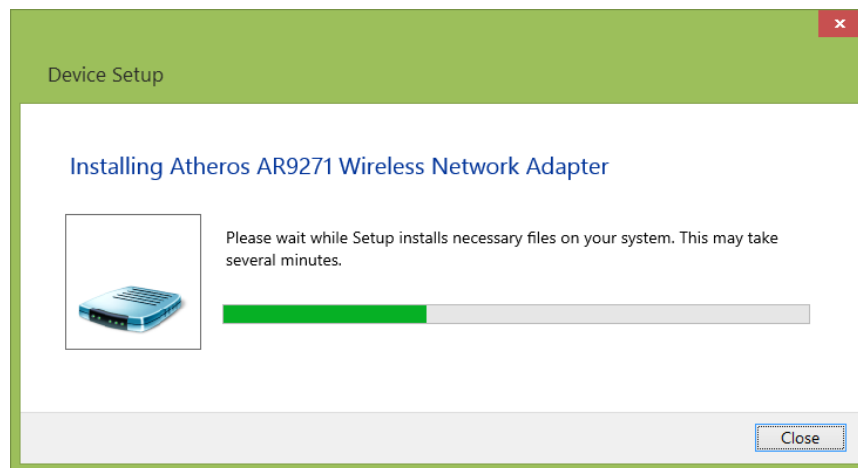
Open Device Manager on your computer



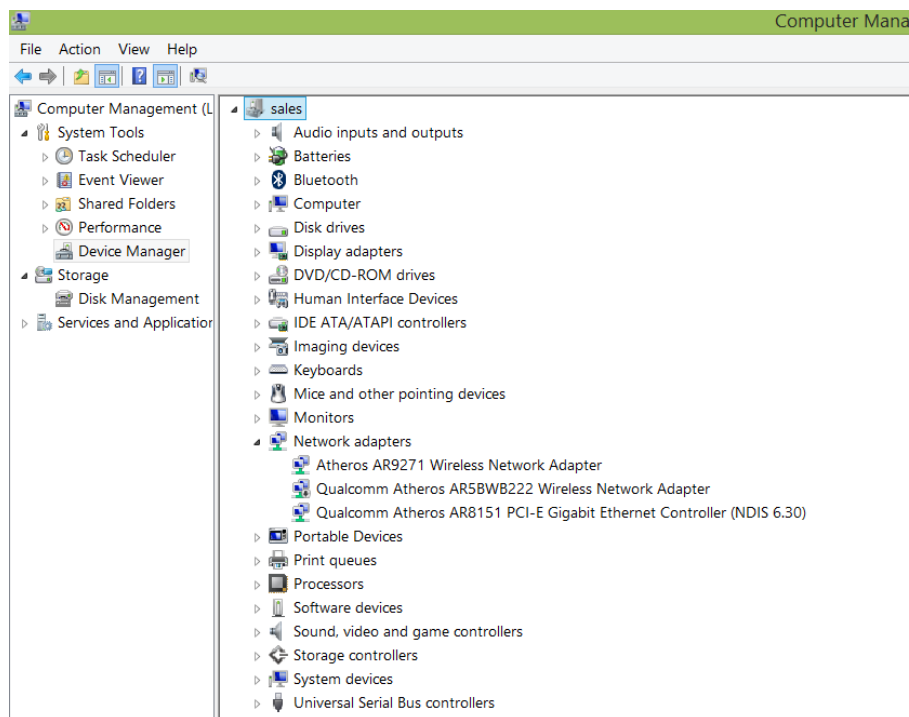
Plug in the AWUS036NHA to USB port of the PC, Windows will detect and trying to install device.



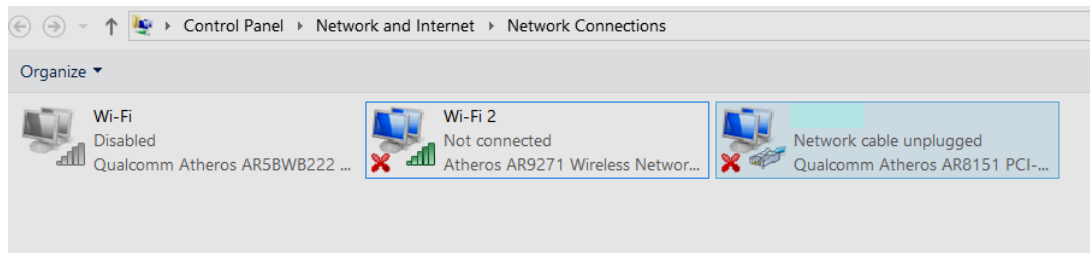
At this stage, LED of the AWUS036NHA will be blinking. When the Windows finds driver for AWUS036NHA (being detected by Windows as **AtherosAR9271 Wireless Network Adapter**) from its online database, driver installation will be in progress.



When the driver installation is completed, AWUS036NHA will be shown in the Device Manager (AWUS036NHA is detected by Windows as **AtherosAR9271 Wireless Network Adapter**).

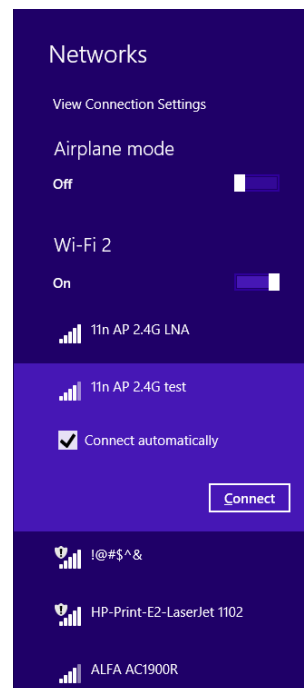


In Windows Network connection manager, the AWUS036NHA is installed as **Wi-Fi 2**.



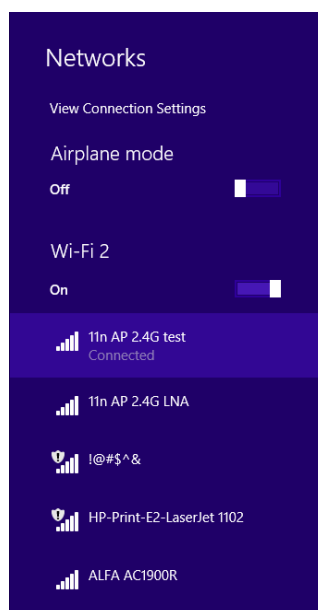
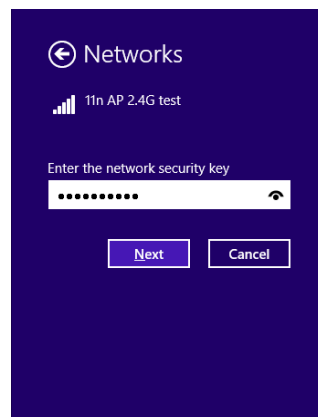
To verify the Internet access. please make sure the wireless access that AWUS036NHA is going to connect is Internet-Ready.

Use Windows' built-in Wireless LAN manager to configure wireless connection of AWUS036NHA.



After wireless site survey, windows wireless network manager will display a list of available access point. Here we select SSID: **11n AP 2.4G test** to connect to.

After selecting the target access point, please input the wireless security password.
(NOTE: Please check with owner of the wireless access point for security password information.)



Start web surfing or open a command line window, execute “ping” command to verify the Internet connection status.

